

CBWCD GENERAL NOTES

- The following General Notes are required by Central Broward Water Control District. They are not meant to be all inclusive, and it is the Engineers' responsibility to add any notes which will inform the Owner and the Contractor of any additional requirement of Central Broward Water Control District.
- Limerock base course shall conform to the requirements of Section 911 of Florida Department of Transportation Standard Specifications, except the minimum percentage of carbonates of calcium and magnesium shall be sixty percent (60%).
- Central Broward Water Control District will be called 24 hours prior to back-filling of drainage trench and prior to the placement of asphalt. Call (954) 432-5110.
- Any revisions to these plans must be approved by Central Broward Water Control District prior to construction.
- Bonds and inspections:
 - Upon District Board of Commissioners approval of plans, but before construction can commence, the following items must be compiled with:
 - Bond (cash or surety), in the District's favor, must be posted in the amount of 110 percent of the developer's engineer's (Engineer of Record) estimate of cost of construction of the paving and drainage works. (Subject to approval of the cost estimate by the District Engineers.)
 - All easements, deed restrictions, maintenance agreements, and deeds as required by the Board shall be presented to the District Secretary and Attorney for approval before recordation. All costs of recording the applicable instrument will be borne by the Developer.
 - Upon compliance with the conditions required by the Board for approval, and receipt of approved plans from the District Engineer, the District Secretary will mark the plans "Approved"; sign same, and distribute the approved plans to the governmental agency involved, the developer, and the District files.
 - The District's Bond Form is the only form approved for use, and it shall be a recorded instrument. Release or reduction from the recorded instrument shall be the responsibility of the applicant.
 - Bonds shall be provided by the principals of development only. Contractor or Sub-Contractor bonds are not acceptable.

- When construction is in progress, the District's Inspector will inspect the installation of drainage works, according to an inspection schedule established by the Board of Commissioners. Inspection must be made by District personnel of all underground storm drain facilities before backfilling; call (954) 432-5110 for an inspection appointment a minimum of twenty-four (24) hours in advance. All costs of periodic inspections of construction by the District shall be borne by the developer.
- Swales, lake banks, slopes, canals, and other excavations shall be bonded separately from other drainage improvements, and will be held by the District until successful completion. The amount of this separate bond will be determined by the District Board of Commissioners and by recommendation of the District Secretary. Certified "As-Built" plans from the Engineer of Record will be required before release of performance bonds. As-Built shall be provided as an overlay on the approved construction drawings at the same scale for comparison purposes. As-Built submittals shall follow the same format of General Review as outlined in Section 3.2 (2) of Central Broward Water Control District's criteria.
- Lake and canal As-Built will be cross sectioned showing the designed section as dashed, As-Built section as solid, and have the top of bank reference to the Lake/Canal Maintenance Easement. Spacing between each cross-section shall be such as to provide enough data to determine if the lake/canal was constructed as designed.
- Upon successful completion of construction, and acceptance of "As-Built"; a percentage of the performance bond as determined by the District Board, and retained by the District, may be released. The balance of bond shall remain in full force and effect for an additional twelve (12) months after final inspection and approval, unless supplemented by new bond forms in the required amounts, and approved by the District Attorney.

LEGEND

	EXIST. CONC. SIDEWALK		PROP. 2" TYPE S-III ASPHALT IN 2'-1" LIFTS
	PROP. 4" CONC. SIDEWALK		PROP. ST. AUGUSTINE SOD
	CLOSE EXIST. DRIVEWAY		

MR	DESIGNED BY	12/10/07	1	11/10/08	GA	RR	CBWCD COMMENTS REVIEW
MM	DATE	12/10/07	2	11/15/08	GA	RR	REVISIONS PER TOWN OF DAVIE COMMENTS
RR	DRAWN BY	12/10/07					
RR	CHECKED BY	12/10/07					
RR	APPROVED BY	12/10/07	No.	DATE	BY	APP.	REVISIONS

ATRIUM CENTRE
4801 S UNIVERSITY DRIVE

DAVIE, FLORIDA

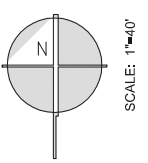


3325 S. UNIVERSITY DR., SUITE 111
DAVIE, FLORIDA 33328
(954)318-0624 (954)358-0190 FAX
CERTIFICATE OF AUTHORIZATION No. 9808

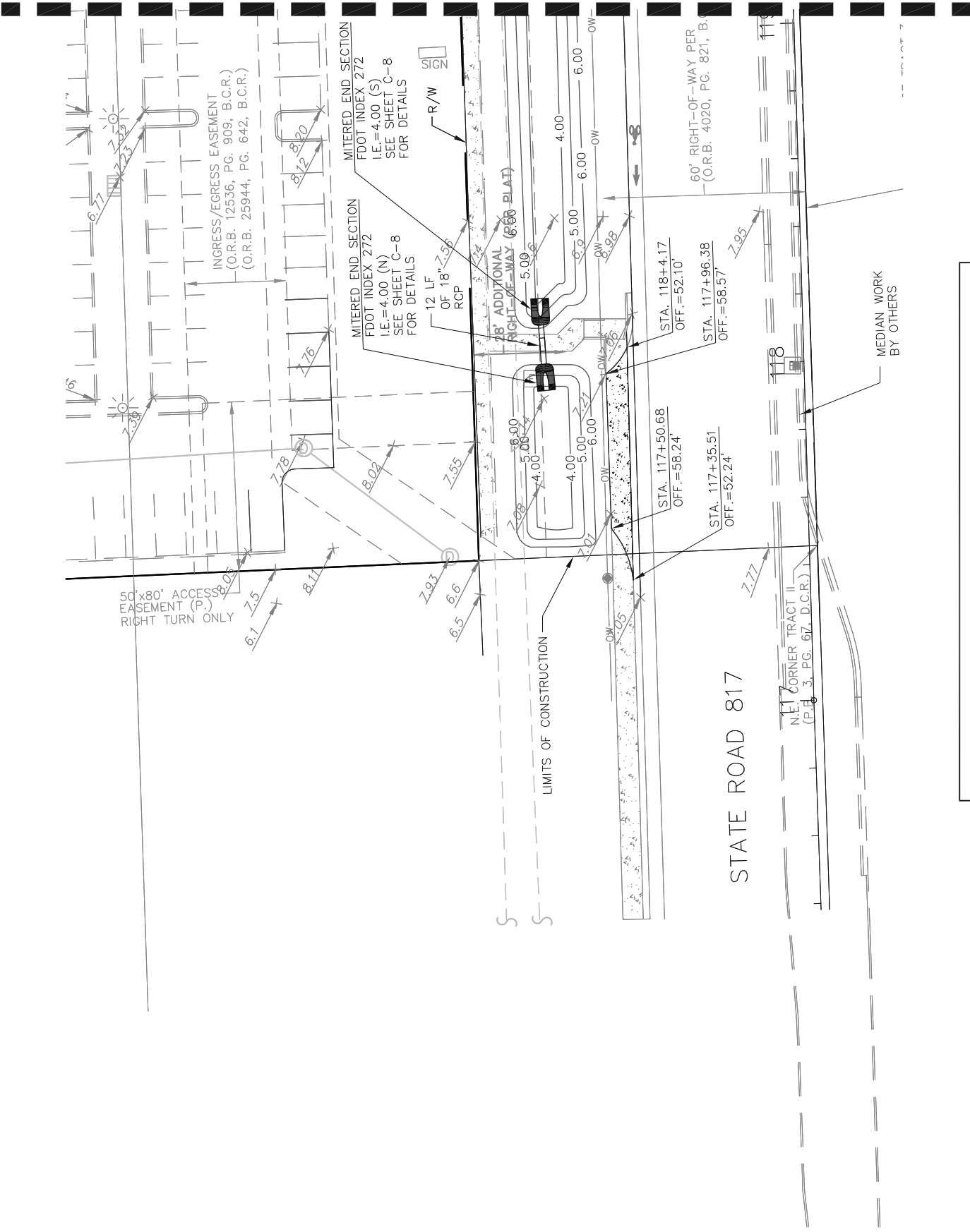
ROBERT J. ROSS, P.E.
FLORIDA P.E. No. 59485
DATE: 03/06/2009

PAVING, GRADING & DRAINAGE
(1 OF 2)

SCALE: 1"=40' SHEET No. C-2



MATCH LINE



MOI NOTE:
LOCAL MEDIA SHALL BE CONTACTED A WEEK PRIOR TO ANY LANE CLOSURES ON THE STATE ROAD SYSTEM AS IT WILL OCCUR DURING PEAK HOURS OR OVER THE SPAN OF MORE THAN ONE DAY. CONTACT BARBARA KELLEHR, FDOT PUBLIC INFORMATION OFFICE AT 954-777-4090 FOR GUIDANCE ON WHO TO CONTACT. PROVIDE A COPY OF THE PRESS RELEASE TO:

FLORIDA DEPARTMENT OF TRANSPORTATION
PUBLIC INFORMATION OFFICE
3400 WEST COMMERCIAL BLVD.
FORT LAUDERDALE, FLORIDA 33309