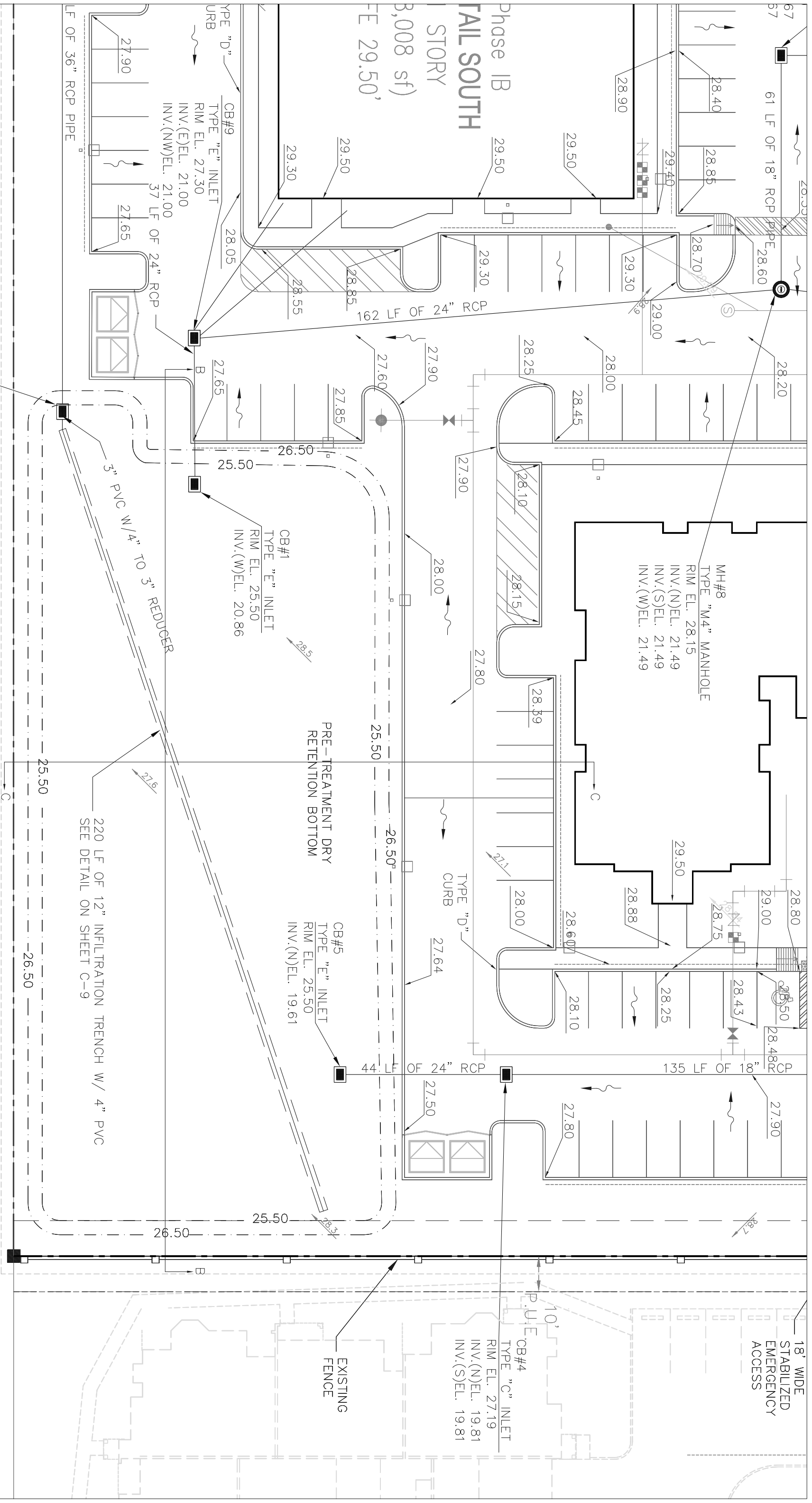


18' WIDE  
STABILIZED  
EMERGENCY  
ACCESS

CB#4  
TYPE "C" INLET  
RIM EL. 27.19  
INV.(N)EL. 19.81  
INV.(S)EL. 19.81

EXISTING  
FENCE



Phase IB  
FALL SOUTH  
3,008 sf  
3<sup>RD</sup> FLOOR 29.50'

MH#8  
TYPE "M4" MANHOLE  
RIM EL. 28.15  
INV.(N)EL. 21.49  
INV.(S)EL. 21.49  
INV.(W)EL. 21.49

CB#1  
TYPE "E" INLET  
RIM EL. 25.50  
INV.(W)EL. 20.86

CB#5  
TYPE "E" INLET  
RIM EL. 25.50  
INV.(N)EL. 19.61

CB#9  
TYPE "E" INLET  
RIM EL. 27.30  
INV.(E)EL. 21.00  
INV.(NW)EL. 21.00

CB#12  
TYPE "E" INLET  
RIM EL. 25.94  
INV.(W)EL. 21.00

220 LF OF 12" INFILTRATION TRENCH W/ 4" PVC  
SEE DETAIL ON SHEET C-9

TOP OF BANK

TYPE "D" URB  
LF OF 36" RCP PIPE

162 LF OF 24" RCP

3" PNC W/ 4" TO 3" REDUCER

44 LF OF 24" RCP

135 LF OF 18" CP

PRE-TREATMENT DRY  
RETENTION BOTTOM

TYPE "D"  
CURB