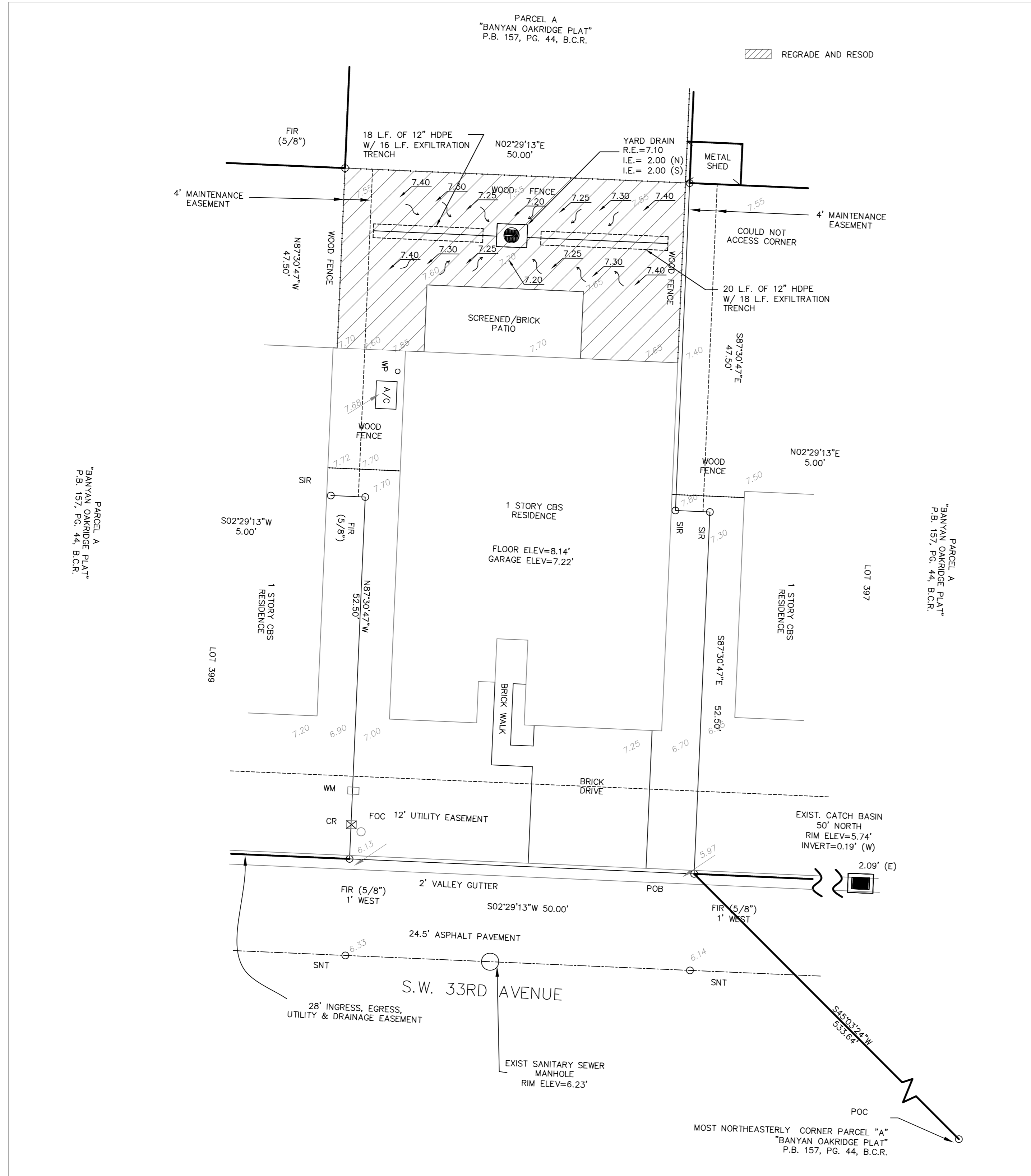
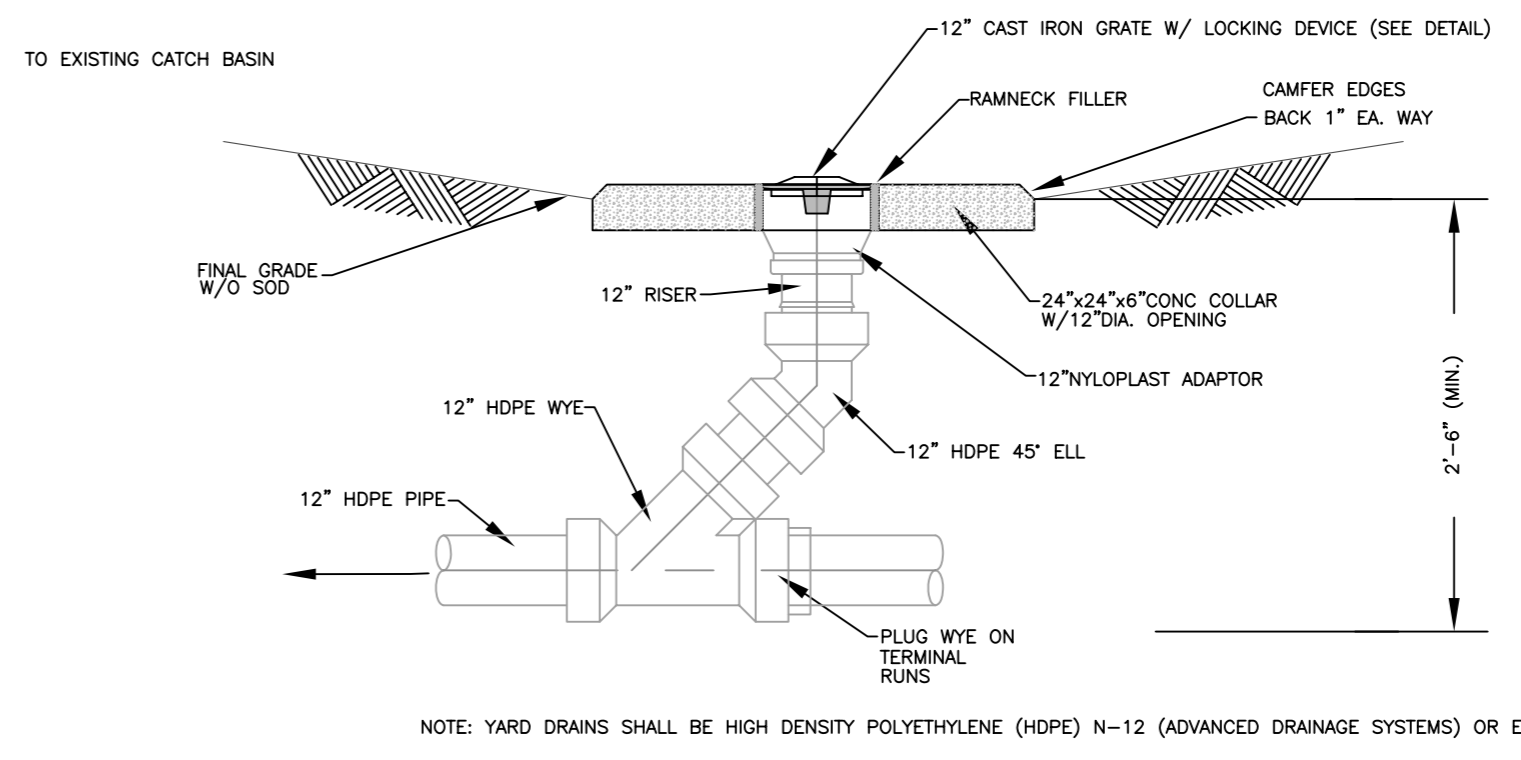


SCALE: 1"=10"

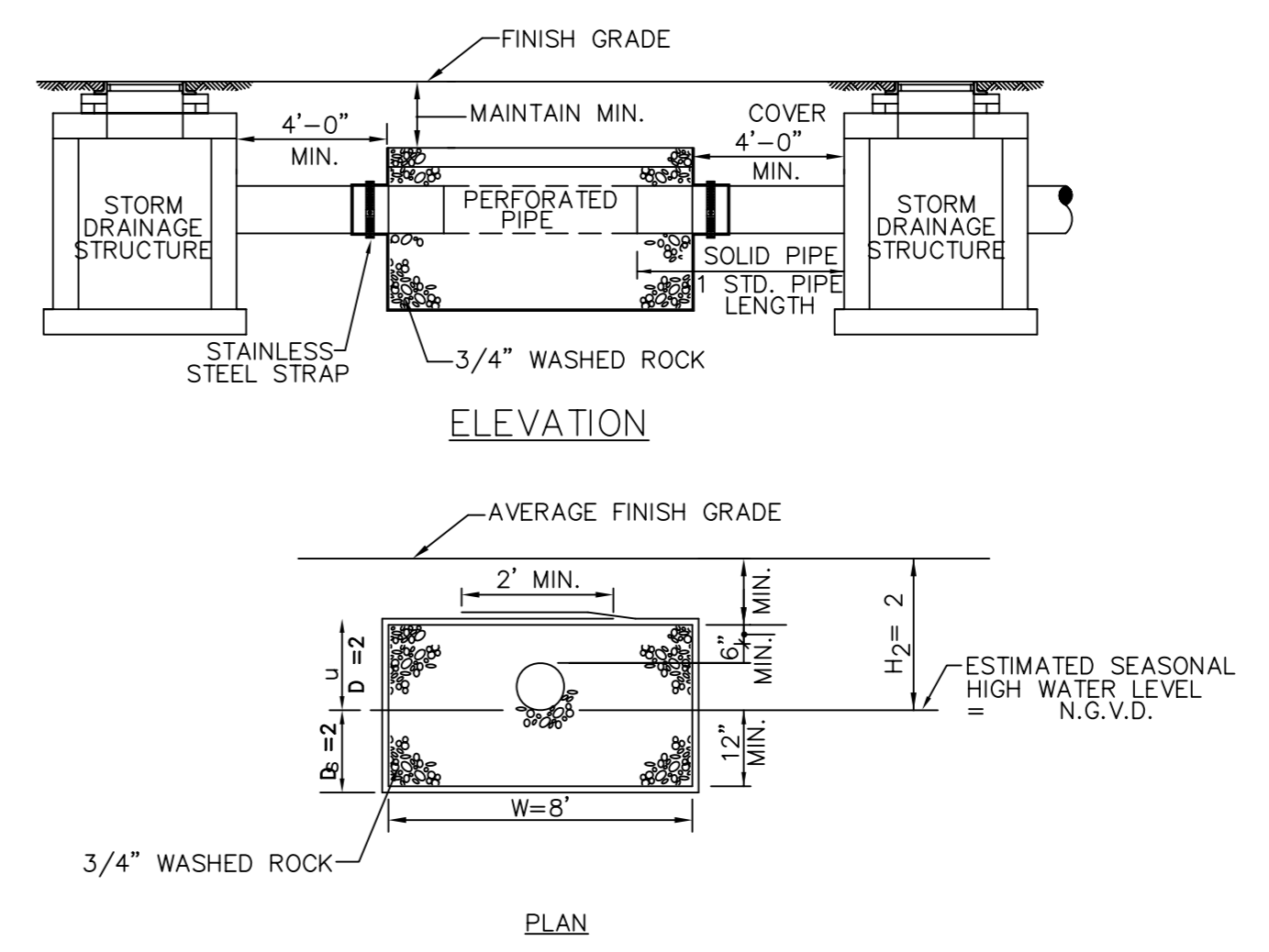


NOTE:

1. CONTRACTOR TO RE-GRADE AND RE-SOD THE AREAS WHERE THE PIPING IS TO BE INSTALLED.
2. IT SHALL BE THE CONTRACTORS RESPONSIBILITY TO VERIFY ALL UNDERGROUND FACILITIES PRIOR TO THE START OF CONSTRUCTION AND COORDINATE WITH THE VARIOUS UTILITY COMPANIES TO RELOCATE, BY PASS OR OTHERWISE ENSURE THAT UTILITY SERVICES WILL NOT BE INTERRUPTED DURING CONSTRUCTION.



YARD INLET DETAIL (NYLOPLAST OR EQUAL)
NTS



- NOTES:**
1. PIPES SHALL CONNECT TO ADDITIONAL CATCH BASINS AS REQUIRED.
 2. BALLAST ROCK SHALL BE FROM FRESH WATER WASHED FREE OF DELETERIOUS MATTER.
 3. TRENCH TO BE LINED WITH AMOCO PROPEX 4545 OR APPROVED EQUIVALENT TYPE FILTER FABRIC. OVERLAP TRENCH LINING MATERIAL A MINIMUM OF 2' AT TOP OF TRENCH. CLOSE ENDS AND STRAP AROUND PIPE.
 4. BIO-BARRIER SHALL BE INSTALLED ADJACENT TO EXFILTRATION TRENCH WHEN EXISTING OR PROPOSED TREES ARE LOCATED WITHIN 10.0' OF CENTERLINE OF PIPE. INSTALLATION OF BIO-BARRIER SHALL BE IN ACCORDANCE WITH BIO-BARRIER DETAIL (SEE LANDSCAPE DRAWING DETAILS).

EXFILTRATION TRENCH DETAIL
NTS

LEGEND:

	EXISTING ELEVATIONS		PROPOSED EXFILTRATION TRENCH
	EXISTING SANITARY SEWER MANHOLE		EXIST. FENCE
	EXISTING CATCH BASIN		EXIST. BUILDING
	PROPOSED YARD DRAIN		

MR	10/10/2006					
DESIGNED BY	DATE					
GA	10/10/2006					
DRAWN BY	DATE					
RR	10/10/2006					
CHECKED BY	DATE					
RR	10/10/2006					
APPROVED BY	DATE	No.	DATE	BY	APP.	REVISIONS

**GROSS RESIDENCE
DRAINAGE RETRO-FIT**

HOLLYWOOD, FLORIDA



10400 GRIFFIN ROAD, SUITE 206
COOPER CITY, FLORIDA 33328
(954)680-2730 (954) 680-2732 FAX

ROBERT J. ROSS, P.E.
FLORIDA P.E. No. 59485
DATE: 10/12/2006

PAVING, GRADING, AND DRAINAGE

SCALE: 1"=10"

SHEET No.

Call 48 hours before you dig in Florida
It's the Law!
1-800-432-4770
FP&L (305) 347-3900
Sunshine State One Call of Florida, Inc.